

IRIS Version MP

Man Portable GPR System



Description:

The Man-Portable Integrated Radar Inspection System - IRIS Version MP is a self contained, low cost single antenna ground penetrating radar system designed for applications requiring high mobility and field portability. The IRIS-MP includes a digital GPR control unit and real-time data acquisition/processing system with high intensity 7 Inch SVGA data display, touch screen control and internal hard disk storage. This system was designed to operate with all of Penetradar IRIS software. Standard features of the IRIS-MP include DMI input for distance tagging, USB data ports for data download and connection of peripherals and serial port for GPS port.

Features:

- ◆ Complete Integrated Radar Inspection System - Includes GPR, Data Acquisition/Processing Computer and Software
- ◆ Built-in high intensity 7" SVGA Display, touch screen control and internal hard disk data storage
- ◆ Low Cost and Easy to Use
- ◆ Designed for Man-Portable Use
- ◆ Digital GPR Control Unit with 1ns/1GHz Horn Antenna (0.5ns/2.5GHz Optional)

Applications:

- ◆ Manual subsurface site inspections, concrete evaluation, layer thickness and rebar depth measurement.



IRIS-MP MAN PORTABLE GPR

IRIS-MP System Specifications

System Configuration:

Single antenna, Man Portable

Power Requirements:

Input Power: 12VDC @ 50W

Radar Video Fully coherent, bipolar, +/- 10 volts max, 3 kHz bandwidth.

Video Output Gain Selection: 1,2,3,4,5,10,20,40,100,200 over direct receiver output.

Max Dimensions/Weight:

14in/36cm (w) x 80in/203cm (l) x 24in/61cm (h), 18 lb (8.2kg) less batteries

Input/Output:

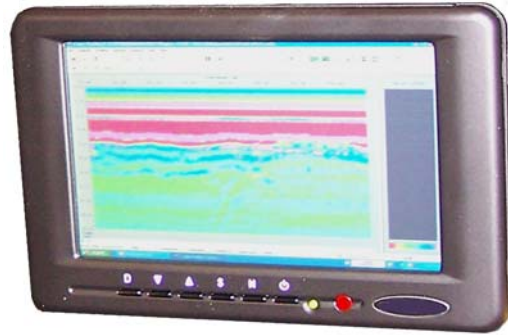
GPS (Serial) Port, Power Input, DMI Input, (2) USB Ports

CPU: Processor - 1.6GHz Atom CPU 1GB Ram, 100GB Internal HD

Data Acquisition Subsystem: 12bit, 80kHz

Display & Touchscreen

7in sunlight readable Color TFT 1024x768 resolution, 500cd/m² with resistive touchscreen, standard



IRIS-MP Screen

Ordering Information

A standard IRIS-MP-32AGC configuration includes:

- Digital Radar Control Unit,
- Antenna
- Antenna Boom (or Handle)
- IRIS Data Collection Software

Model: IRIS-MP-32AGC