

**Man-Portable GPR System**



IRIS-MP Model 301B

**Description:**

The Man-Portable Integrated Radar Inspection System - IRIS Version MP is a self contained, low cost single antenna ground penetrating radar system designed for applications requiring field portability. The IRIS-MP includes a digital GPR control unit and real-time data acquisition/processing system with high intensity LCD data display, touch screen control and internal hard disk storage. Standard features of the IRIS-MP include DMI input for distance tagging, USB data ports for data download and connection of peripherals, GPS port and IRISDAQ Software. The IRIS-MP is suitable for all types of terrain and can be used in a wide variety of environments.

**Features:**

- ◆ Complete Integrated Radar Inspection System - Includes Man-Portable GPR, Data Acquisition/Processing Hardware & Software
- ◆ Built-in high intensity (sunlight readable) LCD Display, touch screen control and internal hard disk data storage
- ◆ Low Cost and Easy to Use
- ◆ Rugged Design for Man-Portable Use in the Field
- ◆ Inspection depths of up to 4 meters
- ◆ Available in 300MHz, 400MHz and 500MHz versions

**Applications:**

- ◆ Detection of subsurface utilities and UST's
- ◆ Geotechnical investigations, manual site inspections, concrete evaluation, layer thickness & void detection.



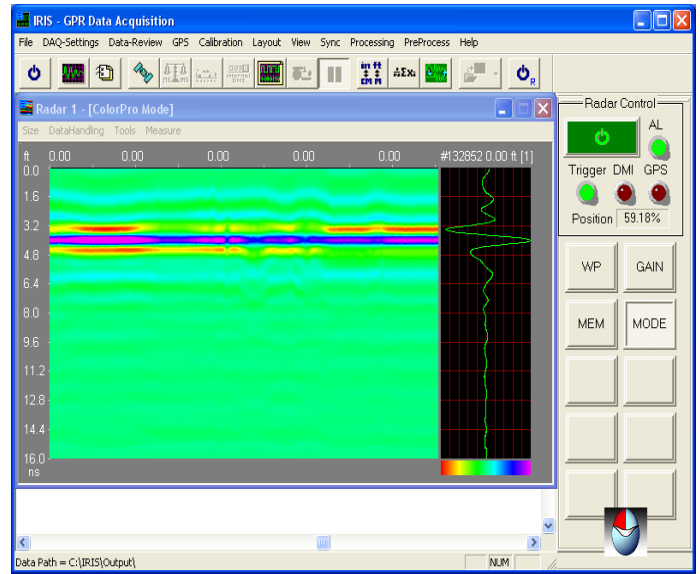
**PENETRADAR CORPORATION**

Niagara Falls, New York 14304 U.S.A.  
 716-731-4369 Tel 716-731-5040 Fax  
 www.penetradar.com  
 email: info@penetrdr.com

## Operation

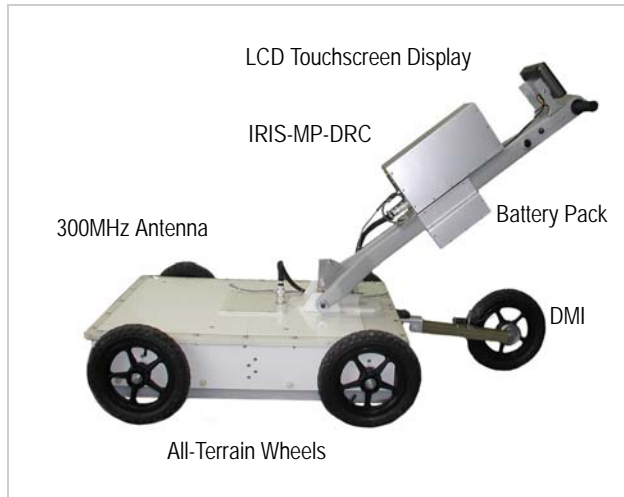
Easy to Use - The IRIS-MP GPR is operated entirely from a touchscreen control panel. Data are viewed and acquired by the onboard data acquisition subsystem and stored on the internal hard drive. Acquired data are displayed simultaneously on the MP's high intensity LCD screen. Data can be analyzed immediately on the IRIS-MP console or transferred via USB for archival storage or download to an office PC for further analysis.

The IRIS-MP virtual control panel facilitates user setup and operation of radar system, acquisition parameters and signal display, with convenient touch screen operation. The IRIS-MP also accommodates direct connection to an external keyboard, mouse and other Windows based USB peripheral devices.



**IRIS-MP Touchscreen Control Panel**

## Standard Equipment



What's Included - A standard IRIS-MP-301B configuration includes:

- Digital Radar Control Unit
- Antenna
- Antenna Handle
- Antenna cable
- All-Terrain Wheel Set
- LCD Touchscreen
- IRISDAQ Software
- DMI Marker Wheel

Options - Several optional components are available, including additional battery packs and GPS receiver.

## IRIS-MP-301B System Specifications

### System Configuration:

One antenna, 300MHz contacting Model 301B

### Power Requirements:

Input Power: 12VDC @4A internal (interchangeable) battery pack

**Radar Video** Fully coherent, bipolar, +/- 10 volts max, 3 kHz bandwidth.

**Video Output Gain Selection:** 1,2,3,4,5,10,20,40,100,200 over direct receiver output.

### Dimensions/Weight:

31/79cm (w) x 60in/152cm (l) x 48in/122cm (h),55 lb (25kg)

### Input/Output:

GPS Port, Power Input, DMI Input, (3) USB Ports

CPU: Processor - 1.6GHz CPU 250GB Internal HD

### Display & Touchscreen

8 inch sunlight readable LCD 800x600 resolution, with resistive touchscreen, standard

DMI: 12 inch marker wheel with direct interface to IRIS-MP DRC

## Ordering Information

**Model IRIS-MP - 301B**